

Darwent Farm

An excellent opportunity to own a "Class A" farm in southern Morgan County. The farm sits between HWY 267 and Irlam Road. The ground is 99% tillable with excellent soils and a strong PI of 138.2.



Worrell-Leka Land Services, LLC

2240 W. Morton
Jacksonville, IL 62650
Phone: 217-245-1618
Fax: 217-245-5318
Email: allanw@worrell-leka.com

2240 W. Morton
Jacksonville, IL 62650



Worrell-Leka Land Services, LLC

DARWENT FARM



Farm Land For Sale

92.45 Acres in
Morgan County, Illinois

Worrell-Leka Land
Services, LLC

92.45 acres Morgan County Farm Land For Sale

Location: This farm is located in southern Morgan County, northeast of Murrayville, IL.

Acres: This tract contains 92.45 taxable acres of which 91.1 are tillable.

Topography: Level.

Soils: Sable, Ipava, Clarksdale and Rozetta. Productivity Index of 138.2, Class A farm.

Taxes: \$1,476.04

Minerals: In tact

Possession: Upon closing, possession is available for the 2010 crop year.

Terms: Cash at closing.

Price: \$7,450 per acre

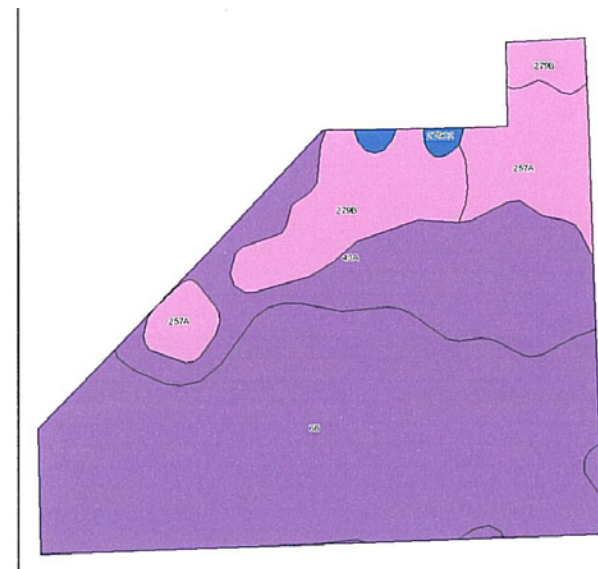
Agency Notice: Allan Worrell is the Seller's designated agent. To offer a contract to purchase or for additional information please contact:

Worrell-Leka Land Service, LLC
 2240 W. Morton
 Jacksonville, IL 62650
 Phone 217-245-1618
 Fax 217-245-5318
 E-mail: allanw@worrell-leka.com

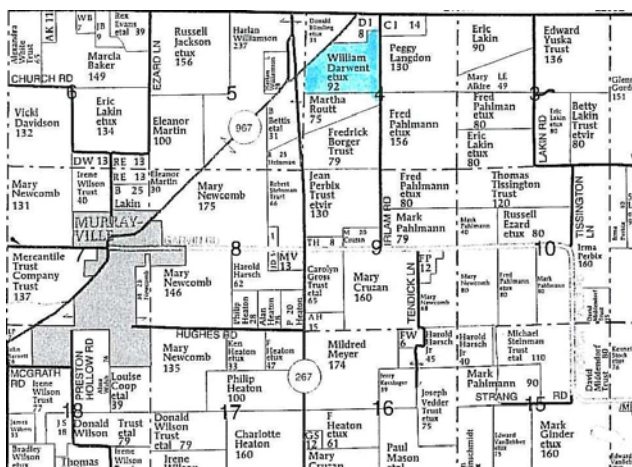
Aerial Map



Soils Map



Plat Map



Soil Types:

- 68 Sable
- 43A Ipava
- 279B Rozetta
- 257 Clarksdale

The information contained herein is believed to be accurate, however, it is subject to verification and no liability for errors or omissions is assumed. Seller reserves the right to reject any and all bids or offers. All inquiries, inspection appointments and offers should be directed to:
 Allan Worrell
 allanw@worrell-leka.com
 247-245-1618

Section 4
 T 13 N, R 10 W