

Scott County Farm on Bethel Lane

A wonderful recreational tract located in Northern Scott County just south of Chapin, IL at the end of Bethel Lane. Has gorgeous landscape that sprawls across both rolling woods and creek bottom fields. Farm offers income potential with 75.84 cropland acres and 25.9 enrolled in CRP. This farm brings a little of everything to the table, great hunting, scenic retreat, and income as well.

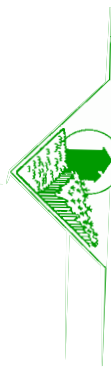


Worrell-Leka Land Services, LLC

2240 W. Morton
Jacksonville, IL 62650
Phone: 217-245-1618
Fax: 217-245-5318

Email: allanw@worrell-leka.com

2240 W. Morton
Jacksonville, IL 62650



Worrell-Leka Land Services, LLC

Scott County Farm on Bethel Lane



Farm Land For Sale

**232.28, 75.84 in crops and
25.9 in CRP
Northern Scott County,
Illinois**

**Worrell-Leka Land
Services, LLC**

232.28, 75.84 in crops and 25.9 in CRP

Location: Northern Scott county, South of Chapin, Illinois.

Acres: 232.28, 75.84 in crops and 25.9 in CRP.

Topography: Rolling to level.

Soils: Orion, Rozetta, Wakeland, Fayette on tillable soils.

Taxes: \$352.74

Minerals: In tact

Possession: Upon closing, subject to tenant's rights.

Terms: Cash at closing.

Price: \$2,500 per acre

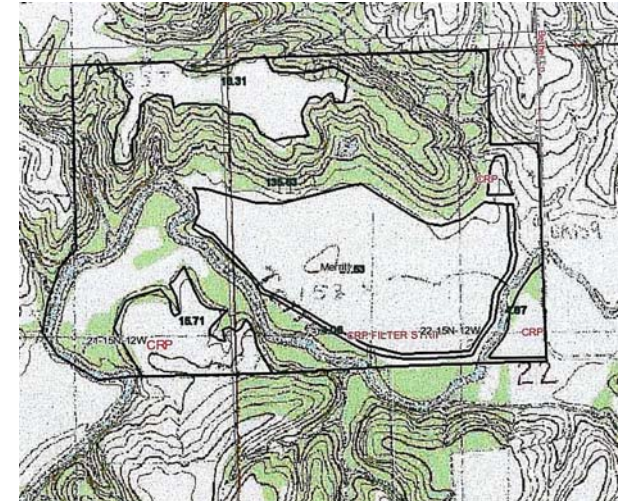
Agency Notice: Allan Worrell is the Seller's designated agent. To offer a contract to purchase or for additional information please contact:

Worrell-Leka Land Service, LLC
2240 W. Morton
Jacksonville, IL 62650
Phone 217-245-1618
Fax 217-245-5318
E-mail: allanw@worrell-leka.com

Aerial Map



Topography Map



Plat Map



**Section 22
T 15 N, R 12 W**

CRP Information

There are 3 CRP fields totaling 25.9 acres. Annual payments total \$2,863. The contracts expire in 2010, 2015 and 2021.

The information contained herein is believed to be accurate, however, it is subject to verification and no liability for errors or omissions is assumed. Seller reserves the right to reject any and all bids or offers. All inquiries, inspection appointments and offers should be directed to:

Allan Worrell
allanw@worrell-leka.com
247-245-1618